



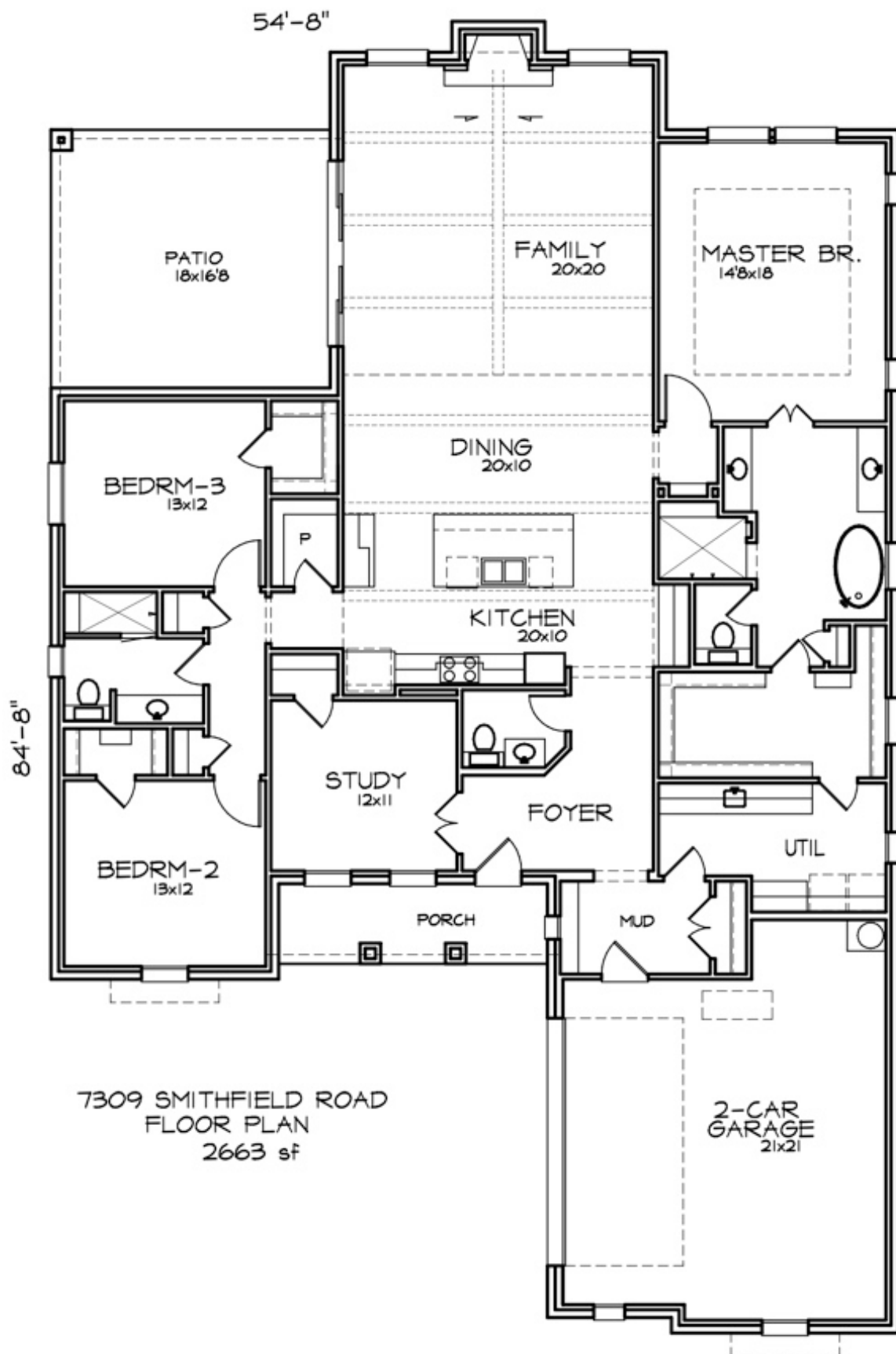
**7309 Smithfield Road**



**Features:**

- 3 bedrooms, 2-1/2 baths, 2 car oversized garage with extra parking in front.
- Open concept living/kitchen/dining with separate study.
- Custom kitchen with stainless steel appliances and gas cook top, quartz counter top and custom backsplash. Large walk-in pantry.
- Custom gas fireplace with stone surround and custom mantel.
- Oversized master bedroom, master bath and master closet.
- Oversized utility room which is accessible from master bedroom closet.
- Mud room with large storage closet.
- Custom built cabinets throughout and custom built-ins in all closets.
- Extremely Energy Efficient with Owens-Corning blown in wall and ceiling insulation, radiant barrier decking, vinyl double pane windows, HVAC, ceiling fans.
- Large covered patio and back yard big enough for a pool.
- Award winning BISD Schools: Green Valley Elem., Northridge Middle, Richland High

**FOR MORE INFORMATION CALL LEE 817.988.8050**



7309 SMITHFIELD ROAD  
FLOOR PLAN  
2663 sf